

2022 Attleboro Crime Report



ATTLEBORO POLICE



Executive Summary

Group A Offense reporting declined by -4.8% during 2022 when compared to the previous year. A prior -3.7% decline in Group A offense reporting was reported for 2021. When compared to the prior ten-year average, Group A Offenses did decline by -8.3%, but continued to be statistically aligned with the number of offenses reported over the last decade. Two out of the three offense classifications (Crimes against Persons / Crimes against Property) experienced notable drops in victim reporting when compared against the previous year, while the Crimes against Society classification experienced a 27% increase when compared to 2021.

All three offense classifications during 2022 were still considered to be within statistical alignment with past crime trends over the prior ten-year historical timeframe. There are, however, several trends that are both noteworthy and of some concern. Overall assault reporting, which consists of Simple; Aggravated; Sexual Assaults experienced a double-digit decline last year. And multiple property-related crimes continue to experience record-low reporting when compared to reporting activity over the last ten years including Burglary, Theft from Vehicles and Motor Vehicle Thefts. However, domestic-related assaults experienced an uptick and Fraud continues to be problematic for many residents. Based on historical crime data, the number of projected crimes for 2023 is anticipated to range between 1,757 to 2,189 Group A Offenses (68% accuracy / 1 Std. Dev.).

Last year, the total volume of Calls for Service decreased by -5.4% after a 7.5 increase was noted for 2021. Abandoned 9-1-1 Calls (-19%), Noise Complaints (-23%) and Public Intoxicants (-32%) all greatly contributed to this decrease, while notable upticks were observed in several call categories including City Ordinance Violations (219%), Crossing Guard Coverage (163%) and Motor Vehicle Stops (264%). Calls for Service projections for the upcoming 2023 year is anticipated to be between 55,294 and 80,058 (68% accuracy / 1 Std. Dev.). Finally, the department personnel arrested and / or summonsed 1,317 individuals last year.

Table of Contents

Category Page

Crime Category Overview 2

Crimes against Persons

Robbery 3

Aggravated Assault 4

Simple Assault 4

Crimes against Property

Burglary 5

Motor Vehicle B&E 6

MV Theft 7

Shoplifting 8

Fraud & Vandalism 9

Crimes against Society

Drug Offenses 10

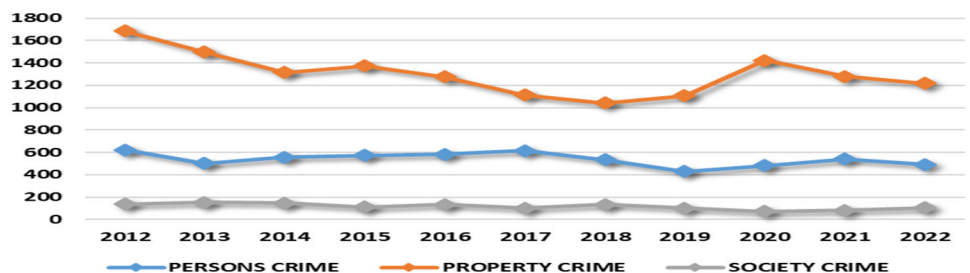
Appendix

Group A Offense Data 11

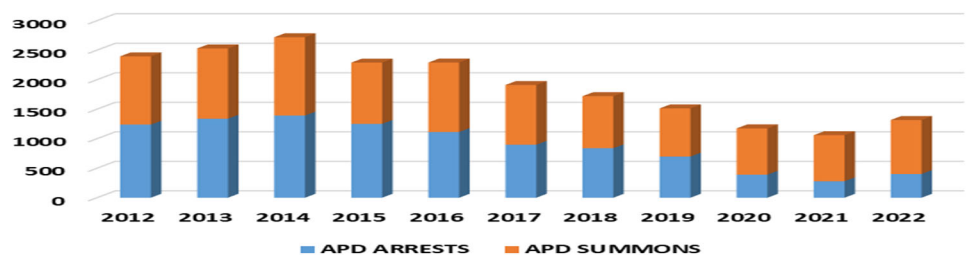
Calls for Service Data 12 - 13

Hot Spot Maps 14 - 15

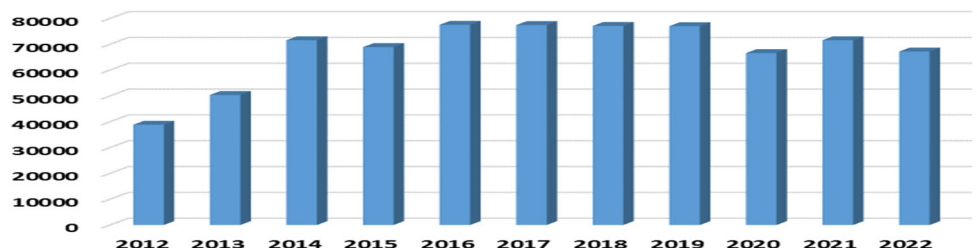
Group A Ten-Year Offense Trends



APD Booking Trends



Calls for Service Ten-Year Trend



A Word on Reporting Crime to the FBI.....

NIBRS Offense Reporting

The FBI Uniform Crime Reporting Program (UCR) is a nationwide, cooperative statistical effort of more than 18,000 federal, state, county, university and tribal law enforcement agencies across the United States that voluntarily report data on offenses reported or known to them. Since 1930, the FBI has administered the UCR program and has continued to assess and monitor the nature and type of crime throughout the nation. The program's primary objective is to generate reliable information for use in law enforcement administration, operation and management.

The UCR Program was initially designed as a summary system to collect only the most serious offense within an incident. However, the UCR Program began using an "incident-based" reporting process in 1989 to capture every offense that occurs within an incident – up to ten crime offenses per incident may be reported. Now through the National Incident Based Reporting System (NIBRS), law enforcement agencies can report data on a large set of offenses within their jurisdictions that are broken down into two separate offense categories: Group A Offenses and Group B Offenses.

Group A Offenses are then divided up into twenty-eight separate categories comprised of seventy-one different crimes. These Group A Offenses are considered more serious offenses and are divided up into three different Offense Classifications: Crimes against the Person (such as Murder and Sexual Assault); Crimes against Property (such as Fraud and Burglary); and Crimes against Society (such as Narcotics and Animal Cruelty). The table listed below provides the reader with an Offense breakdown by Group and Classification.

Group B Offenses are fewer in number and tend to be minor in nature, such as Disorderly Conduct, Liquor Law Violations and Trespassing. Group B Offenses encompass all the crimes for which the FBI UCR program collects data that are not considered Group A Offenses.

More information on the UCR / NIBRS program can be found through the following FBI web link:

<https://www.fbi.gov/how-we-can-help-you/more-fbi-services-and-information/ucr/nibrs>

TYPE	OFFENSE	CLASSIFICATION	NIBRS CODE	TYPE	OFFENSE	CLASSIFICATION	NIBRS CODE
Group A	Aggravated Assault	Persons Crime	13A	Group A	Robbery	Property Crime	120
Group A	Homicide Offenses	Persons Crime	09A - 09B	Group A	Shoplifting	Property Crime	23C
Group A	Human Trafficking	Persons Crime	64A - 64B	Group A	Stolen Property Offense	Property Crime	280
Group A	Intimidation	Persons Crime	13C	Group A	Theft from Building	Property Crime	23D
Group A	Kidnapping / Abduction	Persons Crime	100	Group A	Theft from Coin Machine	Property Crime	23E
Group A	Sex Offenses	Persons Crime	11A - 11D	Group A	Theft from Vehicle	Property Crime	23F
Group A	Simple Assault	Persons Crime	13B	Group A	Theft of Vehicle Parts	Property Crime	23G
Group A	All Other Larceny	Property Crime	23H	Group A	Welfare Fraud	Property Crime	26D
Group A	Arson	Property Crime	200	Group A	Wire Fraud	Property Crime	26E
Group A	Bribery	Property Crime	510	Group A	Animal Cruelty	Societal Crime	720
Group A	Burglary	Property Crime	220	Group A	Drug Equipment Violations	Societal Crime	35B
Group A	Counterfeiting / Forgery	Property Crime	250	Group A	Drug Violations	Societal Crime	35A
Group A	Credit Card Fraud	Property Crime	26B	Group A	Gambling Offenses	Societal Crime	39A - 39D
Group A	Destruction of Property	Property Crime	290	Group A	Pornography	Societal Crime	370
Group A	Embezzlement	Property Crime	270	Group A	Prostitution Offenses	Societal Crime	40A - 40C
Group A	Extortion / Blackmail	Property Crime	210	Group A	Weapon Law Violations	Societal Crime	520
Group A	False Pretenses / Swindle	Property Crime	26A				
Group A	Hacking	Property Crime	26G	Group B	Disorderly Conduct	Group B	90C
Group A	Identity Theft	Property Crime	26F	Group B	Driving under the Influence	Group B	90D
Group A	Impersonation	Property Crime	26C	Group B	Family Offenses, Nonviolent	Group B	90F
Group A	Motor Vehicle Theft	Property Crime	240	Group B	Liquor Law Violations	Group B	90G
Group A	Pocket-Picking	Property Crime	23A	Group B	Trespass of Real Property	Group B	90J
Group A	Purse-Snatching	Property Crime	23B	Group B	All Other Offenses	Group B	90Z

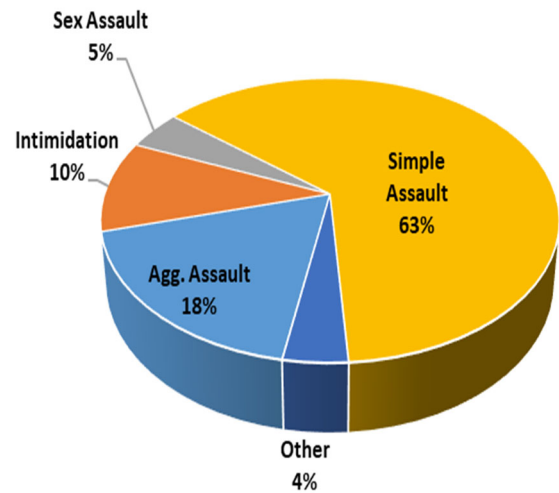
Crimes against Persons

The offenses contained in the Crimes against Persons classification declined for the first time since 2019 with an overall -9.4% decline for 2022 when compared to the previous year. While the total number of offenses in this classification for last year were considered to be statistically aligned with past reporting trends over the last decade, it should be noted that last year's figures were also still -10% below the prior ten-year historical average.

Overall assault reporting (Simple / Aggravated / Sexual) fell by -11% after the previous two years of 2020 and 2021 recorded double-digit increases. However, it should also be noted that there was an uptick in domestic-related events during 2022 and that fifty-one percent of assaults last year had a domestic component to it. The Simple Assault category also continued to account for the bulk of reported crimes reported for the year at sixty-three percent in this classification, a similar percentage to what was reported during 2021.

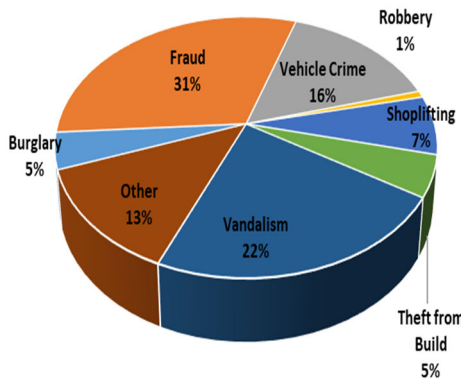
This classification's Crime Rate is 10.5 Crimes per 1,000 residents.

2022 Persons Crime



Crimes against Property

2022 Property Crime



The Crimes against Property classification declined for a second, consecutive year in 2022 with a -4.8% decrease noted for last year when compared to 2021. This entire offense classification continues to experience a decline when compared to the ten-year historical average (-7.2%). Multiple property crimes either experienced significant drops in reporting last year or dropped to decade-lows including: Theft from Vehicle, MV Theft and Robbery.

Even with the notable decrease for the entire offense classification as well as for multiple crime categories, several offenses experienced an uptick in victim reporting. In addition, Fraud, which consists of seven sub-categories, remains one of the highest threats to city residents and accounted for more than 31% of all reported property-related crime in the city last year. Fraud also accounts for some of the highest reported losses with more than \$1.6 million taken in 2022.

This classification's Crime Rate for 2022 is 26.1 Crimes per 1,000 residents.

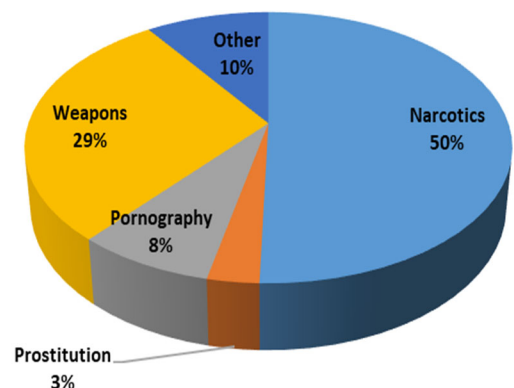
Crimes against Society

The Crimes against Society classification was the only offense classification during 2022 to experience an overall increase – its second, consecutive increase (27%) since 2018. This increase is only due to an additional twenty-two offenses being reported for the year. It should be noted that even with increased offense reporting last year that the entire crime classification continues to sit with a -13% decline when compared to the prior ten-year average.

Across all the crimes in this offense classification, the Drug / Narcotics Violation category experienced the largest reporting increase (+89%) in 2022 with an additional twenty-three offenses for the year. The other offenses in this category either remained unchanged for the year or saw minor increases / decreases when compared to the prior year.

This classification's Crime Rate in 2022 is 2.2 Crimes per 1,000 residents.

2022 Societal Crime



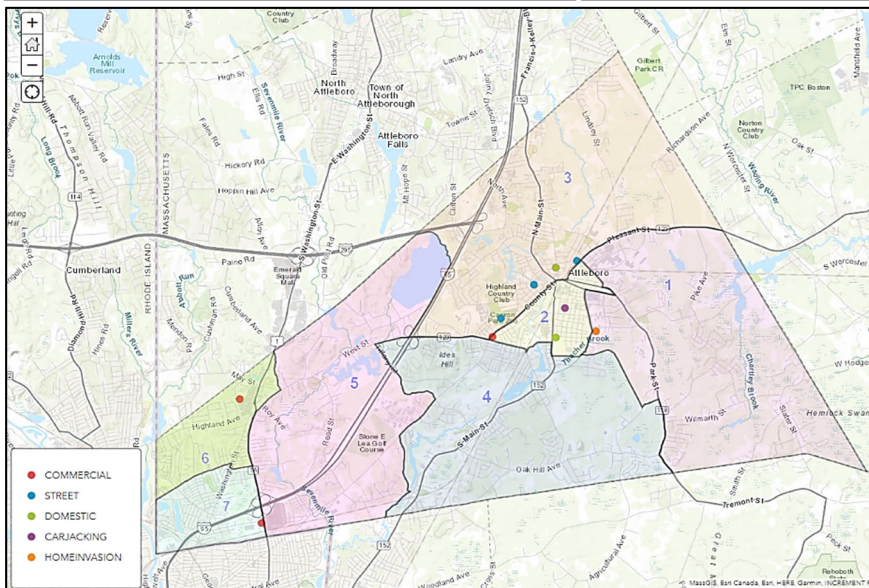
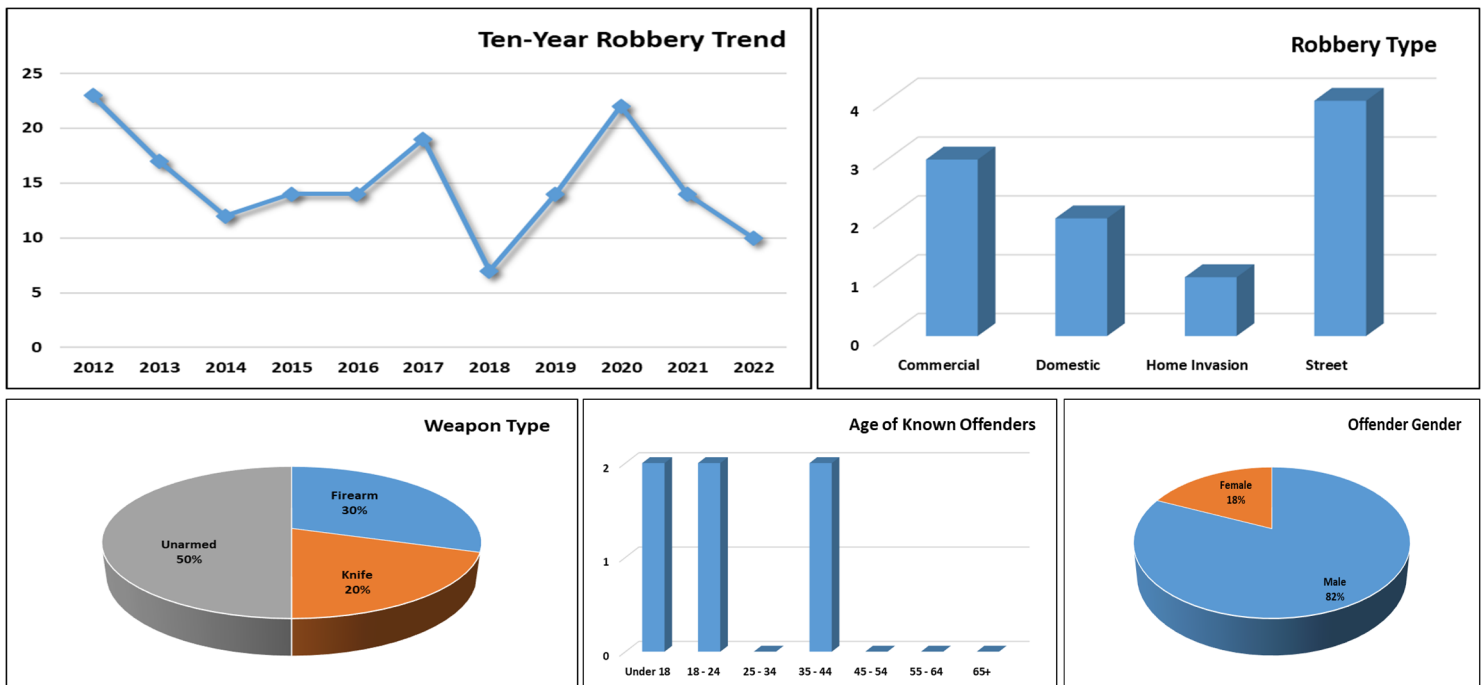
Robbery

Incidents of Robbery last year declined for a second, consecutive year in a row after the category had experienced upward growth primarily between 2015 and 2020. There were four fewer robbery events in 2022 when compared to 2021, which led to a -29% decrease over the prior year. Still, the number of robberies that occurred in 2022 is considered to be statistically aligned with previous reporting of robbery offenses over the last decade.

Commercial establishments continued to make up one-third of robbery victims last year, which is the same percentage as reported in 2021. Only two of the three commercial robberies in 2022 were successful for the offender; one incident being a shoplifting-turned robbery event and the other incident only netting the suspect less than \$500. The number of street robberies also decreased from six to four last year and with victims knowing their suspects in three of those incidents.

Eight of the ten robbery events in 2022 were concentrated in the general uptown / downtown area of the city. Five of these eight uptown / downtown incidents occurred on or within near proximity of Route 123. Last year's commercial robbery events were reported on Beats 2, 6 and 7. Two of these commercial locations have been previously robbed at least one additional time in the last five years.

Six suspects were charged in connection with five robbery events last year. Eight out of ten suspects were male parties with an age range that spanned between 15 and 42 years-old for identified subjects.



2023 Outlook

Robbery incidents in the city have been on a steady downward trend over the last ten years with a decline in events observed over the last two years. The rate of robbery decreased to two per 10,000 residents in 2022, compared to the three per 10,000 residents reported the prior year.

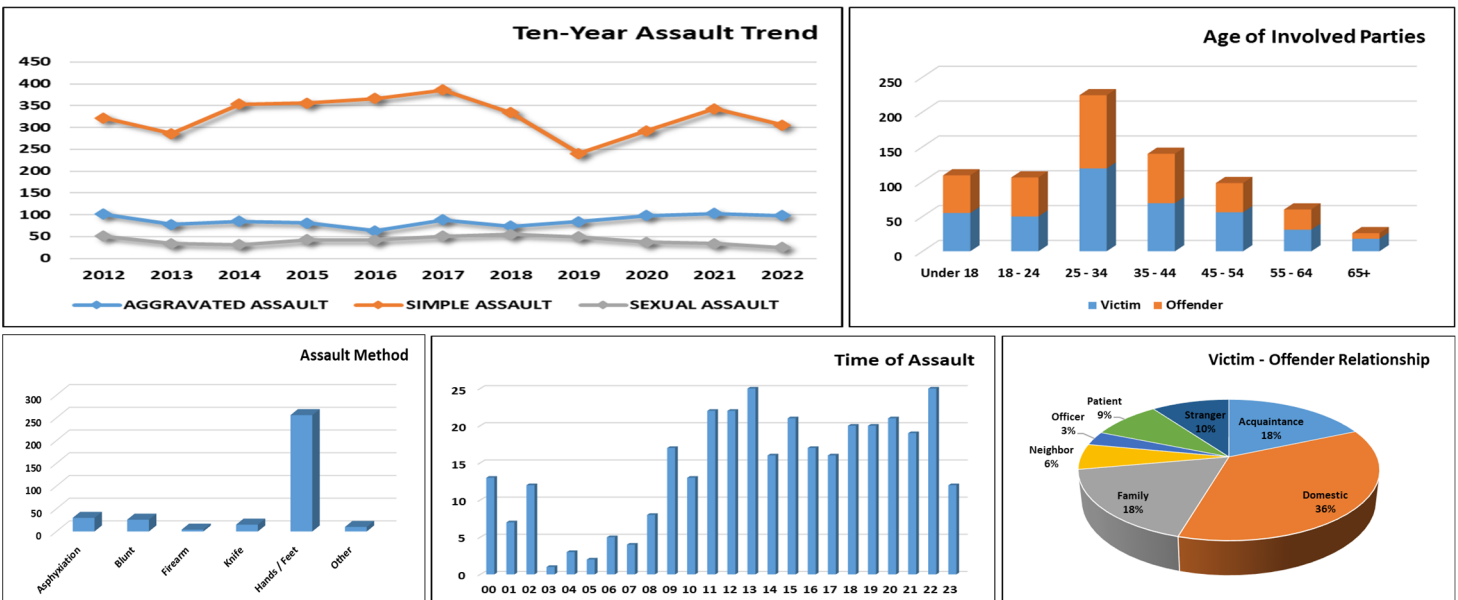
Based upon prior offense history as well as the historical ten-year average, robbery events are expected to remain within range of the statistical average (16) during 2023. As discussed last year, the general uptown area, especially nearest the Common, remains a concern for these opportunistic events, as do several specific commercial establishments which were previously victimized in recent years.

Assault

After two consecutive years of increased reporting (14% in 2020 and 12.4% in 2021), overall assault events (Simple / Aggravated / Sexual) declined by -11% during 2022. All three assault categories experienced declines during 2022 as Sexual Assault reporting dropped by -26.5% and Simple Assault reports declined by -11%. The Aggravated Assault category declined by -5% for the year. All three categories of assault also showed significant decline against their ten-year average. Also of note, Sexual Assault reports declined for a fourth year in a row.

Fifty-one percent of all assaults reported last year had a domestic component, compared to the forty-four percent of assaults with a domestic tie that were reported previously during 2021 and the forty-seven percent of assaults reported in 2020. Domestic assault reporting within the city accounted for more than 35% of all violent crimes reported under the Crimes against Persons classification last year, which is an increase from the 29% reported in 2021 and 32% reported during 2020. Friends and acquaintances made up the second most affected category at 13%, while assaults committed by complete strangers declined from the 16% reported in 2021 to 12% during 2022.

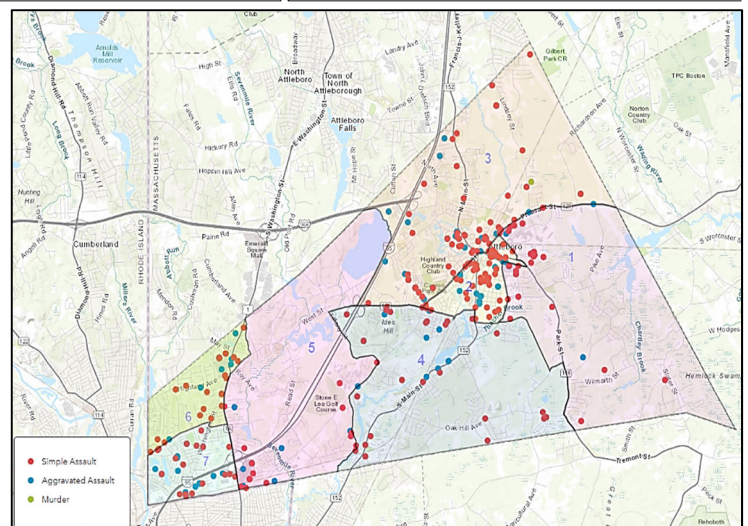
Female parties accounted for 48% of all victims, a continuing decline from the 52% (2021) and 59% (2020) reported in recent years. The ages between 25 and 34 continued to be the most-affected age group for both offenders and victims, which accounted for approximately 29% of all involved parties; in 2021, this category represented 24% of all involved individuals. The 35 to 44 age range was the second most-affected age group, while the Under 18 category claimed third most-affected age group with more than 14% of all affected subjects. Alcohol was found to be a factor in more than 21% of assault incidents, which is an increase from the 16% noted in 2021. Assaults also primarily occurred within the home (62%), while both Arbour Fuller and the High School were found to be the two largest city hotspots for assault reports last year.



2023 Outlook

Documented assaults dropped off dramatically after February, but like last year, began to steadily climb throughout the year afterwards. While both the Aggravated and Simple Assault categories declined against their ten-year averages, they remained statistically aligned with what could have been expected. The surprising finding here is the uptick in domestic-related activity. In addition, twenty-four known offenders were found to be responsible for 18% of reported assaults last year (across all assault categories).

Assaults continue to cluster in the more densely populated uptown area and any proposed intervention should work to target the most affected demographic in that part of the community.



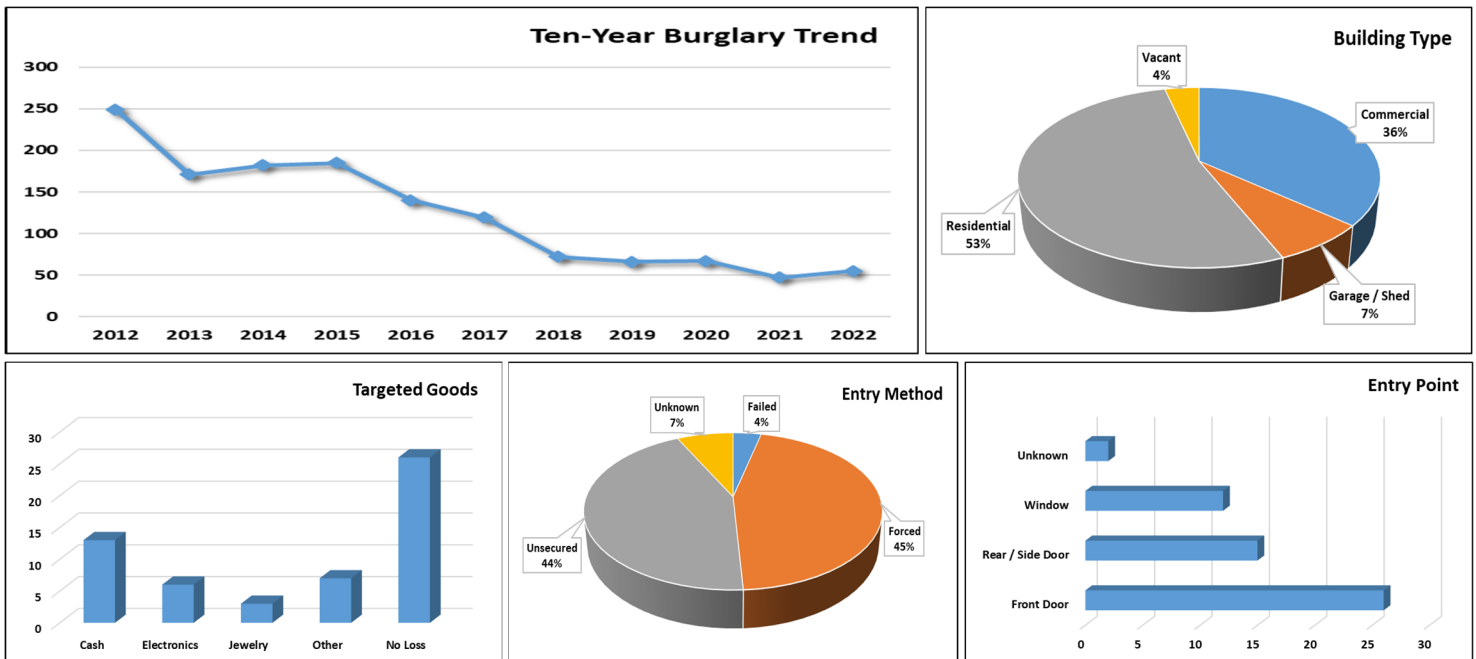
Burglary

The offense of Burglary experienced a 17% increase during 2022 with just eight additional offenses reported for the year when compared to 2021. The number of events for last year were still well-below the ten-year average of 130 burglary offenses, which is a -58% drop against the prior ten-year historical timeframe. Burglary offenses have been in a steady, downward slide since at least 2011, when the department received more than 250 reports of burglaries.

Sixty percent of all burglarized buildings last year were residential units, which was a similar finding in 2021 (51%). More than half of the affected residential locations reported nothing of value missing, while the remainder of victims reported approximately \$60,000 worth of electronics, jewelry and US currency missing. There were fewer affected commercial establishments in 2022; however, businesses suffered higher losses in 2022 that included cash, merchandise and several motor vehicles totaling more than \$168,000. During 2021, commercial establishments had only reported an estimated \$5,000 in losses.

Residential burglary activity was steady throughout the entire year, while burglary events involving businesses appeared to be primarily focused during the last six months of 2022. More than one-third of reported residential burglaries were believed to have occurred between the hours of 6AM and 12PM – during the previous year, offenders appeared to be more active after 4PM.

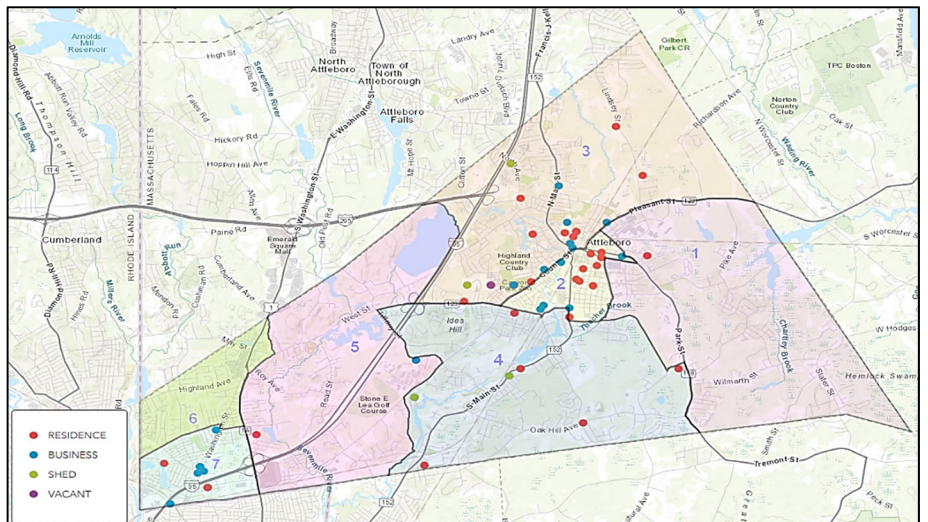
Close to three-quarters of affected residences were entered through a front or rear-facing / basement door and with 45% of those points of entry being left unlocked or unsecured. This is an increase from the 38% of affected residences that were found to be unlocked / unsecured during 2021. Officers also identified and / or charged suspects in one-third of all burglary events in 2022.



2023 Outlook

Burglary offenses continued their downward trend in 2022 that is expected to continue into 2023 and beyond due to several factors that include remote work and inexpensive home security cameras and viewing systems.

Residential burglary events continue to cluster in the uptown / downtown area in Beats 2 & 3, where more than 60% of such burglaries were reported last year. Additional scrutiny should be given to those residential events that occur in the more-populated East Side of Beat 2 as well as to multiple commercial burglary clusters on Beats 3 and 7.

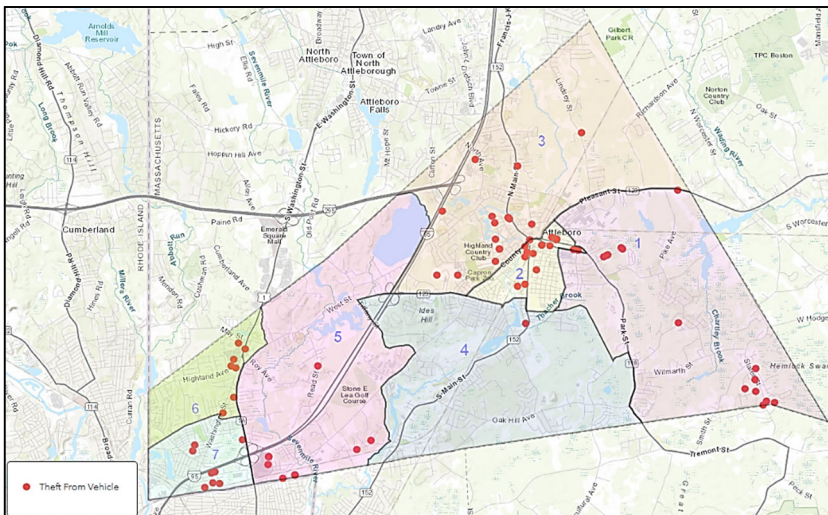
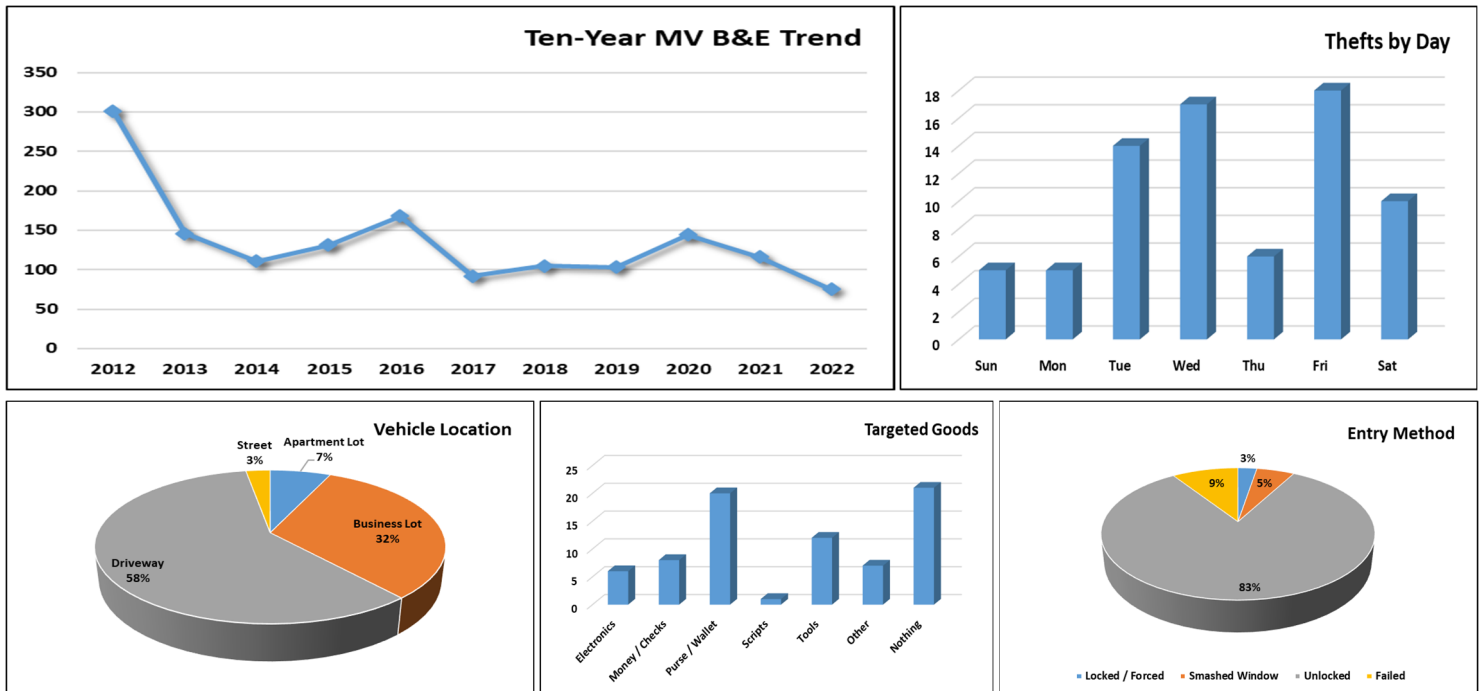


MV B&E

Thefts from motor vehicles declined for a second, consecutive year with a -36% drop in reported offenses for 2022. Not only does last year's decline in offenses follow on the heels of a -19% decline reported the previous year in 2021, but the number of such thefts in 2022 were the lowest reported in more than a decade. When compared to the ten-year average (2012-2021), thefts from motor vehicles declined by more than -47% during last year. Theft in 2022 were at their highest last year between July and September, when victims reported close to fifty percent of all thefts for the year.

Theft patterns appeared to change during 2022 when compared to 2021. Victims in three-quarters of all thefts from vehicles reported that the theft occurred sometime between the hours of 7PM and 7AM, which was a similar finding two years ago in 2020 (79%). Offenders also appeared to be more active during the work-week as opposed to the weekends, with more thefts occurring Tuesday through Thursday evenings. Twenty-seven percent of victims reported the loss of a wallet or purse in a theft incident this past year. As with prior years, suspects still owe much of their success to unlocked vehicles with 83% of victims leaving vehicles unsecured.

Approximately one-third of theft events last year occurred in South Attleboro (west of Newport Ave.), while another one-third of incidents were concentrated in the general uptown area of Patrol Beats 2 & 3. Smaller pockets of activity during 2022 were noted along Slater Street, which was the result of a one-night crime spree, as well as in the Market Basket / Home Depot parking lot. Officers identified and / or charged nine suspects in nineteen of these thefts during 2022.



2023 Outlook

Thefts from vehicles continue to be an opportunistic crime for most offenders as evidenced by the large gap between locked versus unlocked vehicles year after year.

The arrests of several offenders last year will clear up theft activity in certain areas of the city. However, proactive patrol, especially during the overnight hours between midnight and 5AM, is still encouraged in those areas where opportunity has historically existed including: along the Pawtucket line bordering Beat 7; as well as the general uptown area of Beats 2 & 3 with specific focus on the MBTA / YMCA lots (daytime) and Emory/Holman St. area.

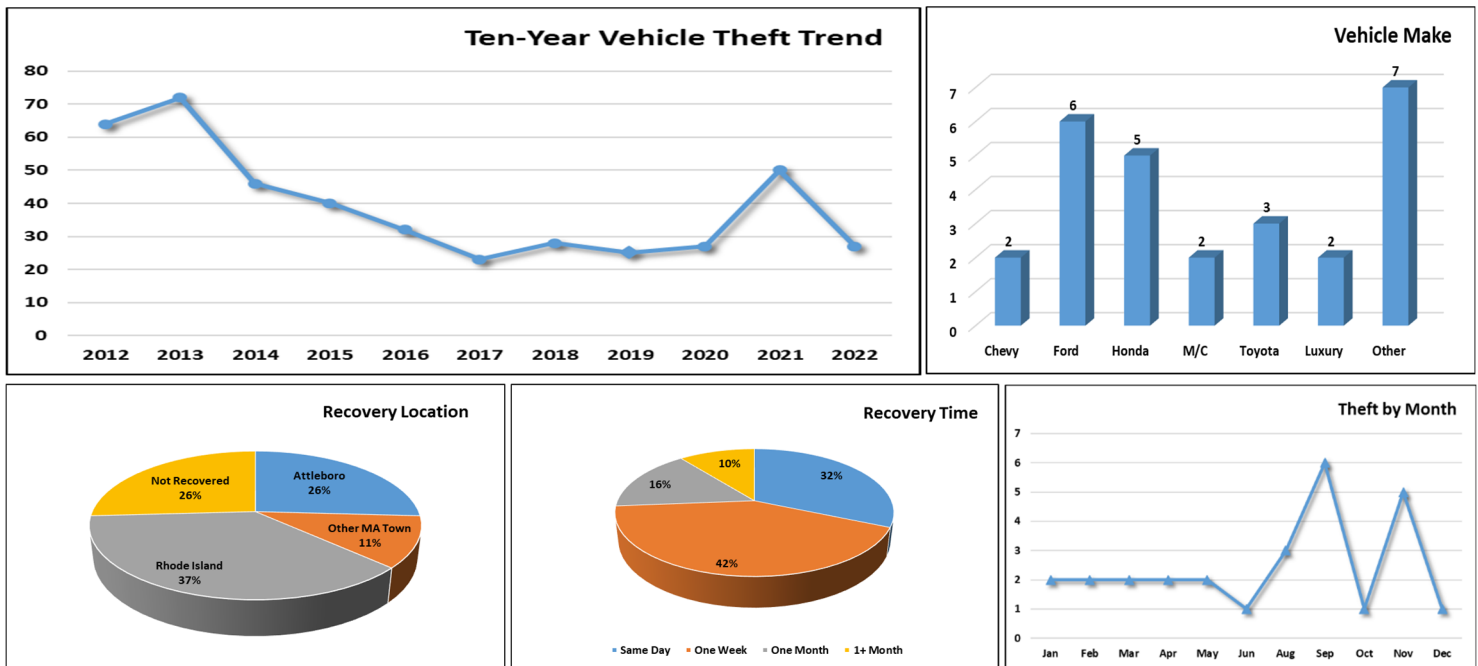
MV Theft

Motor Vehicle Theft declined by -46% in 2022 when compared to the prior year, when this offense category climbed to an eight-year high during 2020. While vehicle thefts within the city continue to follow a national, downward trend of theft for decades, it should also be noted that last year's dramatic drop is also the largest decline in vehicle thefts reported to the department in more than a decade.

Approximately half of all vehicle thefts during 2022 occurred in South Attleboro last year and with the majority of those thefts being reported in Patrol Beat 7, which borders Rhode Island. The half-mile stretch of road between the 900 block and 1100 block of Washington Street in particular was most at risk and accounted for twenty-two percent of all thefts last year. A large number of vehicle thefts were also found to be in the same general area of Patrol Beat 7 the prior year.

Sixty percent of stolen vehicles were less than ten years old, which is a reversing trend from the fifty percent (2021) and sixty-seven percent (2020) of stolen vehicles which were over that ten-year vehicle age in prior annual reports. There was an uptick last year in stolen vehicles in which the victims left the car either running and / or with the keys in the unlocked vehicle; eighty-one percent of vehicles were stolen in this manner in 2022 compared to 68% (2021) and 70% (2020). Only fifteen percent of the vehicles stolen last year were either an SUV or truck; during previous years that percentage was 50% (2021) and 40% (2020).

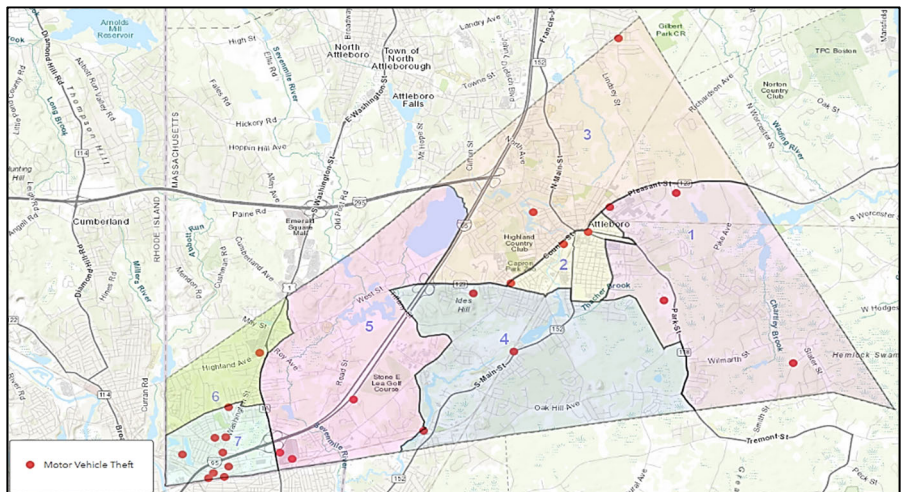
Seventy percent of vehicles were recovered in 2022, which is the same amount recovered during 2021. Nine vehicles were recovered locally (six in Attleboro), while an additional ten vehicles were recovered out-of-state in Rhode Island. In addition, officers were able to identify and / or charge seven individuals in connection with five of these thefts last year.



2023 Outlook

This theft category is expected to continue its downward trend in coming years due to newer trends in vehicle security and theft prevention. A high percentage of vehicles continues to be stolen out of South Attleboro and recovered in Rhode Island, which helps confirm the belief that several groups of individuals from RI continue to target vehicles in that area for transportation.

As in past years, more public awareness of leaving your keys in your vehicle or to allow your vehicle to run while stopping in the store is still needed as 81% of stolen cars were left in such a manner last year.

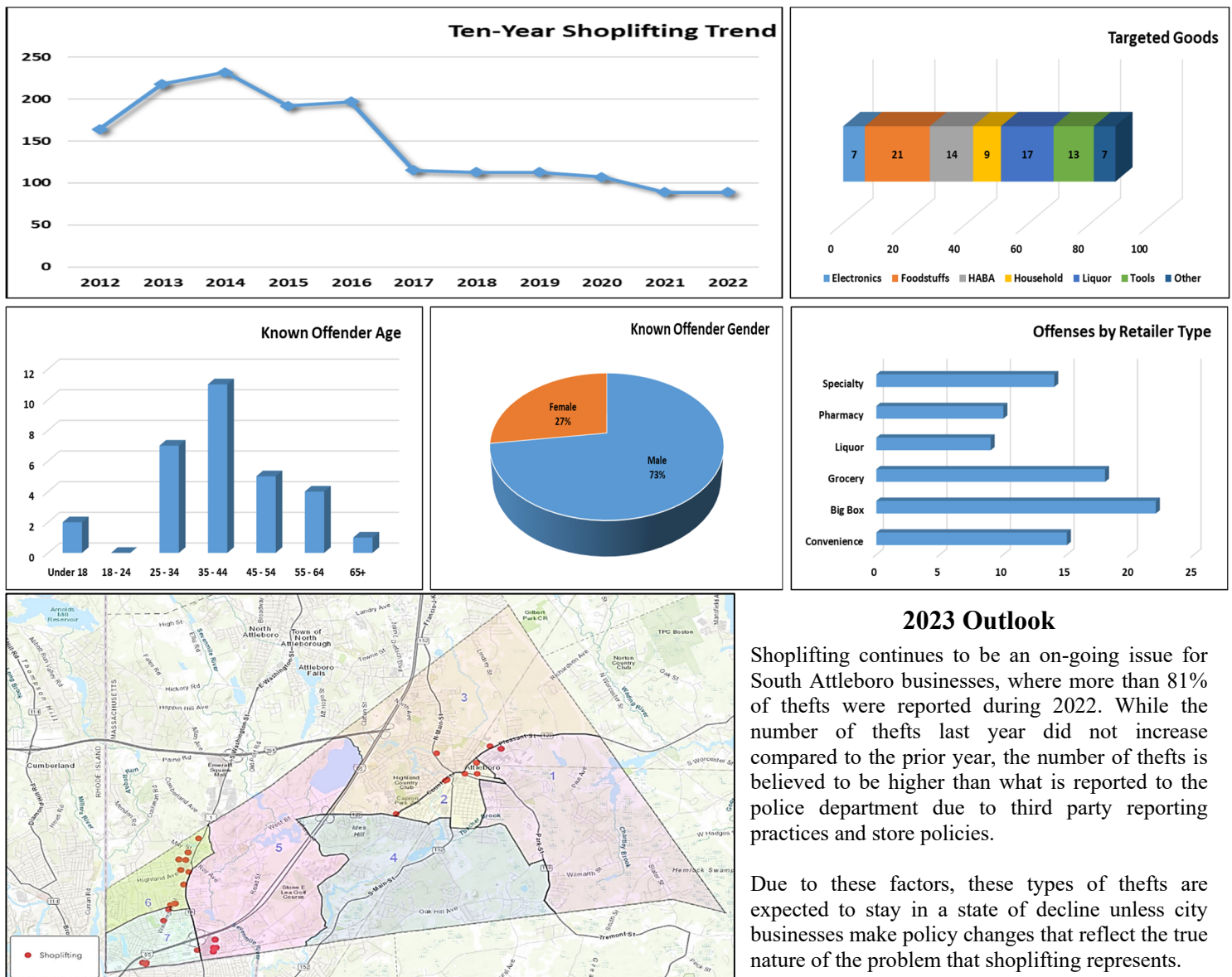


Shoplifting

City businesses reported the same number of shoplifting offenses during 2022 that they reported the prior year in 2021. The number of documented thefts over the last decade were highest between 2013 and 2016, just prior to dropping off dramatically with the closure of stores such as K-mart as well as recent policy changes made by business entities regarding active shoplifting events in their stores. These offenses still continue to be at their lowest levels in more than ten years and with a -42% decline noted over the previous ten-year average.

Twenty-four businesses reported shoplifting events during 2022, which is similar to the number of businesses reporting thefts just prior to the start of the Covid pandemic. Store employees reported more than \$33,000 in total loss last year, a decrease from the \$40,000 in losses reported in 2021, and which equated to an average loss of \$387 per incident compared to the \$449 average loss per incident in 2021. Home Depot, CVS and Market Basket once again accounted for more than one-third of all reported thefts during 2022 and with Yankee Sprits following those locations with 9% of all documented thefts. Foodstuffs and liquor topped the list of most-stolen items for 2022, accounting for more than 43% of stolen items last year, but only \$4,000 in losses. Health and Beauty products, however, accounted for thirty percent of total dollar loss (\$9,800) last year followed up by the theft of tools (\$7,900).

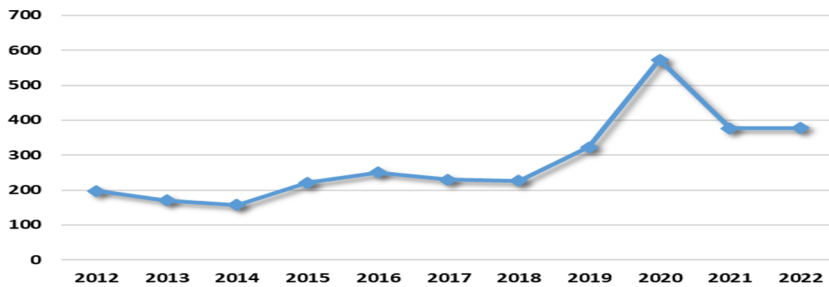
The Patrol Division made four arrests and summonsed an additional twenty-seven individuals in connection with thefts during 2022 that resulted in a 36% clearance rate for such theft events. Seventy-three percent of suspects were identified / described as male individuals, while the 35 to 44 age group continued to contain the highest number of identified offenders.



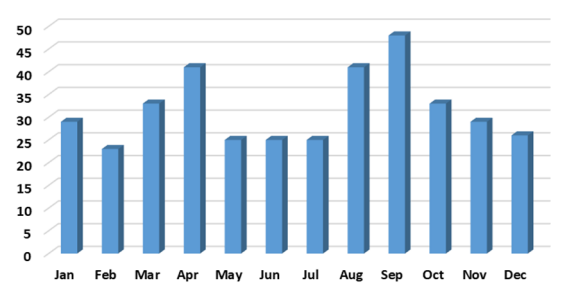
Fraud

Victim reporting of Fraud offenses, which are composed of seven separate sub-categories, closely matched the previous year's reporting with just one additional fraud offense being reported during 2022. The amount of reported fraud offenses has more than doubled within the last decade. It is quickly becoming the "crime of choice" for those who understand the intricacies of the offense, which can often provide a large return with low-risk when compared to other crimes. Seventy-eight percent of affected victims last year were city residents. Fifty-three percent of those affected residents were adults fifty-five years of age or older; and, it was this group of residents who shouldered the heaviest losses at more than seventy percent of total losses across all city residents. It should be noted that total loss for both city businesses and residents amounted to \$1,652,231 for the year. Last year's total losses were a steep increase from the \$1,026,693 loss overall reported during 2021.

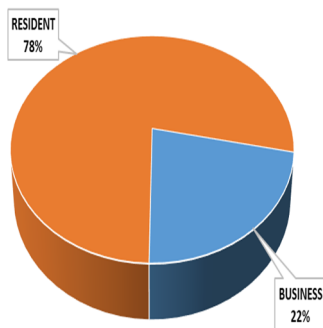
Ten-Year Fraud Trend



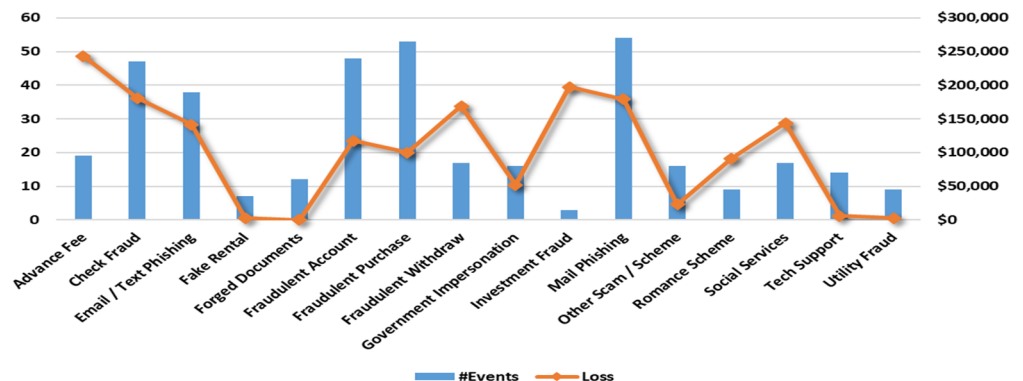
Fraud Offenses by Month



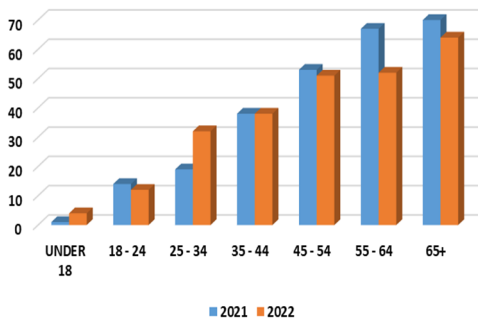
Victim Type



Fraud Type with Total Amount Loss



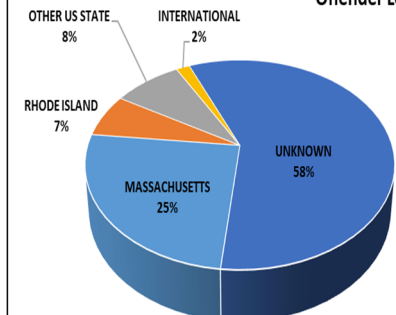
Victim Age 2021 vs 2022



Monetary Loss by Victim Age

Age Range	Total Loss	Average Loss
Under 18	\$224	\$56
18 - 24	\$51,657	\$4,305
25 - 34	\$98,680	\$3,084
35 - 44	\$116,011	\$3,053
45 - 54	\$169,069	\$3,315
55 - 64	\$277,199	\$5,331
65+	\$766,195	\$11,972

Offender Location



Top Fraud Offenses for Individuals 55+

- Mailbox Fishing
- Advance Fee Schemes
- Email / Text Phishing
- Tech Support
- Romance Scheme

2023 Outlook

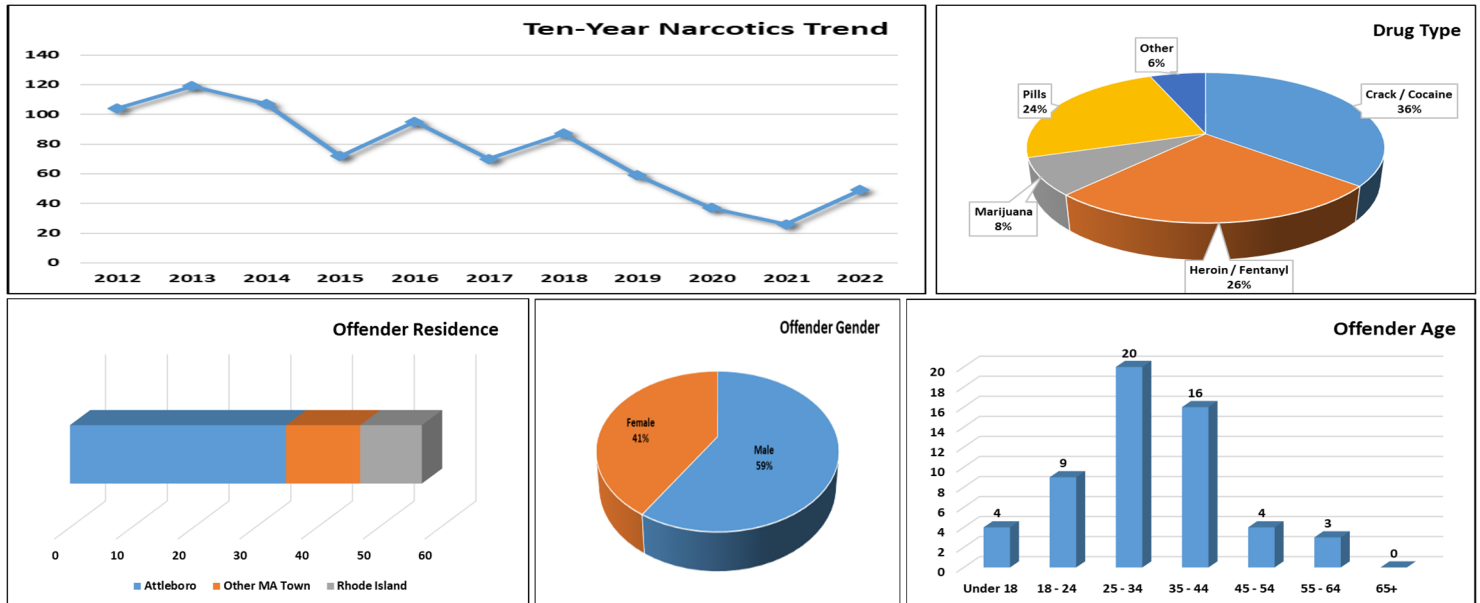
Newly released Federal Trade Commission data shows that consumers reported losing nearly \$8.8 billion to fraud in 2022, an increase of more than 30 percent over the previous year. In Attleboro, individuals 65+ lost the most with an average loss of almost \$12,000 per victim, compared to the category of 55 to 64 who reported an average loss of \$5,331. Additional work also needs to be done with securing outside mail facilities, which contributed greatly to fraud last year. Fraud will either remain stable or continue to climb during 2023 and well beyond.

Drug Offenses

Drug-related offenses last year experienced its first increase in offenses since 2018. When compared to the previous year, drug-related offenses increased by sixty-eight percent; however, it should be noted that such offenses during 2021 were at their lowest levels in more than a decade and that this increase in 2022 was only due to an additional twenty-three drug offenses reported for the year. Drug-related offenses have been in a state of decline since 2014 and last year's number of offenses, while showing a significant increase over 2021, were still -37% below the previous ten-year average.

Department personnel arrested and / or summonsed fifty-four individuals during 2022 in connection with forty-six drug-related offenses in the city. The number of arrested / summonsed individuals last year was a significant increase from the twenty-seven such individuals documented in 2021. Fifty-five percent of reported incidents in 2022 were due to a dispatched call for service made by a business or citizen, which is a decrease from the sixty-four percent of incidents reported in 2021. Fifty-nine percent of offenders were male with an average age of 31, while the remaining forty-one percent of female offenders had an average age of 35.

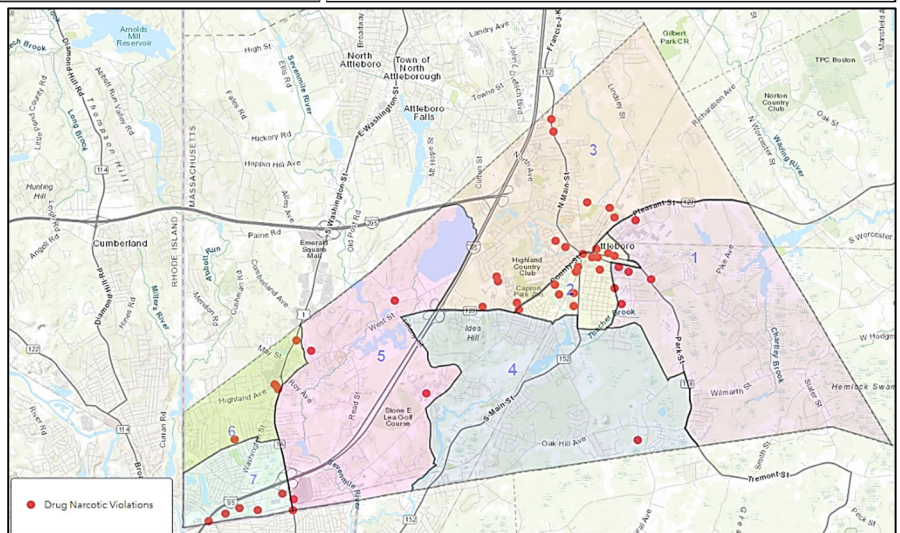
The possession or sale of suspected cocaine / crack-cocaine accounted for thirty-six percent of incidents last year, which is an increase from the twenty-eight percent reported in 2021. Suspected heroin / fentanyl accounted for another twenty-six percent of offenses. As noted in previous annual bulletins, the total number of drug crimes reported on a yearly basis should be considered skewed as they do not include drug-related overdose incidents reported to the department. For example, including a drug possession for an overdose-related event would add an additional 118 drug offenses towards the FBI's societal crimes category for the city of Attleboro for 2022 alone.



2023 Outlook

Even though 2022 experienced a statistically significant -19% decrease in overdose events, drug use is expected to persist and possibly increase into 2023 given this past year's higher, documented numbers.

Sixty-five percent of the incidents last year overlapped with some of the known crime and disorder hotspot locations in the general uptown area. Thirteen of these incidents were reported in a smaller, 0.25 mi² area uptown in the general area of Park Street. Targeted enforcement of this area, along with several smaller areas of South Attleboro, may contribute to increased reporting and higher number of arrests.



APPENDIX

Ten Year Group A Offense Data														
CRIMES AGAINST PERSONS	2012	2013	2014	2015	2016	2017	2018	2019	2020	2021	2022	10 YR AVG	STDEV	ZSCORE
AGGRAVATED ASSAULT	101	78	85	81	63	88	74	84	98	103	98	86	11.944	1.05
FONDLE/INDECENT/CHILD MOLESTING	25	16	15	18	27	32	32	20	21	18	14	22	5.953	-1.41
FORCIBLE RAPE	20	13	10	16	11	13	14	19	13	10	5	14	3.300	-2.70
FORCIBLE SODOMY	1	4	2	4	1	2	4	4	0	3	2	3	1.432	-0.35
HUMAN TRAFFICKING,COMMERCIAL SEX ACT	0	0	0	0	0	0	0	1	2	0	1	0	0.640	1.09
HUMAN TRAFFICKING,INVOLUNTARY SERVICE	0	0	0	0	0	0	0	0	0	0	0	0	0.000	n/a
INCEST	0	0	0	0	1	0	0	0	0	0	0	0	0.300	-0.33
INTIMIDATION	139	98	88	88	110	84	70	51	42	57	57	83	27.731	-0.93
JUSTIFIABLE HOMICIDE	0	0	0	0	0	0	0	0	0	0	0	0	0.000	n/a
KIDNAPPING/ABDUCTION	7	4	0	4	1	5	2	6	10	4	3	4	2.795	-0.47
MURDER/NONNEGLIGENT MANSLAGHTE	0	0	0	0	0	1	0	0	1	0	1	0	0.400	2.00
NEGLIGENT MANSLAUGHTER	1	0	0	0	0	0	0	0	0	0	0	0	0.300	-0.33
SEXUAL ASSAULT WITH AN OBJECT	0	0	0	1	0	2	2	4	3	2	3	1	1.356	1.18
SIMPLE ASSAULT	322	286	353	356	366	386	334	240	292	343	305	328	41.614	-0.55
STATUTORY RAPE	5	1	4	4	2	2	3	2	0	1	1	2	1.497	-0.94
TOTAL	621	500	557	572	582	615	535	431	482	541	490	544	56.572	-0.95
CRIMES AGAINST PROPERTY	2012	2013	2014	2015	2016	2017	2018	2019	2020	2021	2022	10 YR AVG	STDEV	ZSCORE
ALL OTHER LARCENY	142	157	141	139	75	64	66	65	78	121	108	105	36.35	0.09
ARSON	6	2	5	2	5	2	4	1	1	3	5	3	1.70	1.12
BRIBERY	0	0	0	0	0	0	0	0	0	0	0	0	0.00	n/a
BURGLARY/BREAKING AND ENTERING	249	171	182	185	140	119	72	66	67	47	55	130	63.33	-1.18
BUYING, RECEIVING, SELLING ETC	29	25	22	22	37	30	24	22	25	14	18	25	5.78	-1.21
COUNTERFEITING/FORGERY	50	32	38	28	38	33	36	46	32	51	63	38	7.59	3.24
CREDIT CARD/ATM MACHINE FRAUD	26	40	25	58	38	19	27	54	29	44	35	36	12.38	-0.08
DESTRUCTION/VANDALISM PROPERTY	326	310	243	271	171	213	201	197	237	253	274	242	47.18	0.67
EMBEZZLEMENT	7	7	10	10	10	8	11	12	7	7	5	9	1.81	-2.15
EXTORTION/BLACKMAIL	3	5	0	0	1	1	10	13	26	27	21	9	9.85	1.26
FALSE PRETENSES/SWINDLE/GAME	73	66	50	72	70	78	62	125	108	106	138	81	22.61	2.52
HACKING	0	0	0	0	0	0	1	8	11	8	5	3	4.14	0.53
IDENTITY THEFT	0	0	0	0	0	1	10	29	341	104	78	49	102.23	0.29
IMPERSONATION	48	32	44	63	86	75	44	32	12	4	1	44	24.52	-1.75
MOTOR VEHICLE THEFT	64	72	46	40	32	23	28	25	27	50	27	41	16.19	-0.85
POCKET-PICKING	0	0	2	0	11	1	1	1	3	4	1	2	3.16	-0.41
PURSE-SNATCHING	0	0	0	0	1	1	0	0	0	0	1	0	0.40	2.00
ROBBERY	23	17	12	14	14	19	7	14	22	14	10	16	4.54	-1.23
SHOPLIFTING	164	218	232	192	197	115	113	113	107	89	89	154	49.89	-1.30
THEFT FROM BUILDING	136	122	115	96	123	132	125	113	69	64	62	110	23.92	-1.99
THEFT FROM COIN OP MACH/DEVICE	0	0	1	1	2	1	0	0	0	1	0	1	0.66	-0.90
THEFT FROM MOTOR VEHICLE	301	146	111	131	168	92	105	103	144	116	75	142	57.55	-1.16
THEFT OF M/V PARTS/ACCESSORIES	38	75	36	49	39	62	48	37	35	92	88	51	18.39	2.01
WELFARE FRAUD	0	0	0	0	1	1	0	0	3	1	0	1	0.92	-0.65
WIRE FRAUD	0	0	0	0	17	23	47	29	37	59	58	21	20.55	1.79
TOTAL	1685	1497	1315	1373	1276	1113	1042	1105	1421	1279	1217	1311	186.19	-0.50
CRIMES AGAINST SOCIETY	2012	2013	2014	2015	2016	2017	2018	2019	2020	2021	2022	10 YR AVG	STDEV	ZSCORE
ANIMAL CRUELTY	0	0	0	0	0	0	1	2	1	4	6	1	1.25	4.16
ASSIST OR PROMOTE PROSTITUTION	0	0	0	0	0	1	6	0	1	0	1	1	1.78	0.11
BETTING/WAGERING	0	0	0	0	0	0	0	0	0	0	0	0	0.00	n/a
DRUG EQUIPMENT VIOLATIONS	0	0	1	0	0	2	7	6	4	4	3	2	2.54	0.24
DRUG/NARCOTIC VIOLATIONS	104	119	107	72	95	70	87	59	37	26	49	78	29.00	-0.99
GAMBLING EQUIPMENT VIOLATIONS	0	0	0	0	0	0	0	0	0	0	0	0	0.00	n/a
OPERATING/PROMOTING/GAMBLING	0	2	0	0	0	0	0	0	0	0	0	0	0.60	-0.33
PORNOGRAPHY/OBSCENE MATERIAL	4	6	8	10	8	6	8	12	5	12	12	8	2.62	1.56
PROSTITUTION	0	0	0	1	2	0	2	0	1	3	1	1	1.04	0.10
PURCHASING PROSTITUTION	0	0	0	0	0	0	6	4	0	0	1	1	2.05	0.00
SPORTS TAMPERING	0	0	0	0	0	0	0	0	0	0	0	0	0.00	n/a
WEAPON LAW VIOLATION	29	26	29	28	29	23	24	19	22	32	30	26	3.81	1.02
TOTAL	137	153	145	111	134	102	141	102	71	81	103	118	26.90	-0.55
CRIME CLASSIFICATION	2012	2013	2014	2015	2016	2017	2018	2019	2020	2021	2022	10 YR AVG	STDEV	ZSCORE
PERSONS CRIME	621	500	557	572	581	615	533	431	482	541	490	544	56.539	-0.96
PROPERTY CRIME	1685	1497	1315	1373	1276	1113	1042	1105	1421	1279	1217	1311	186.19	-0.50
SOCIETY CRIME	137	153	145	111	134	102	135	102	71	81	103	118	26.44	-0.57
TOTAL	2443	2150	2017	2056	1991	1830	1710	1638	1974	1901	1810	1973	216.42	-0.75

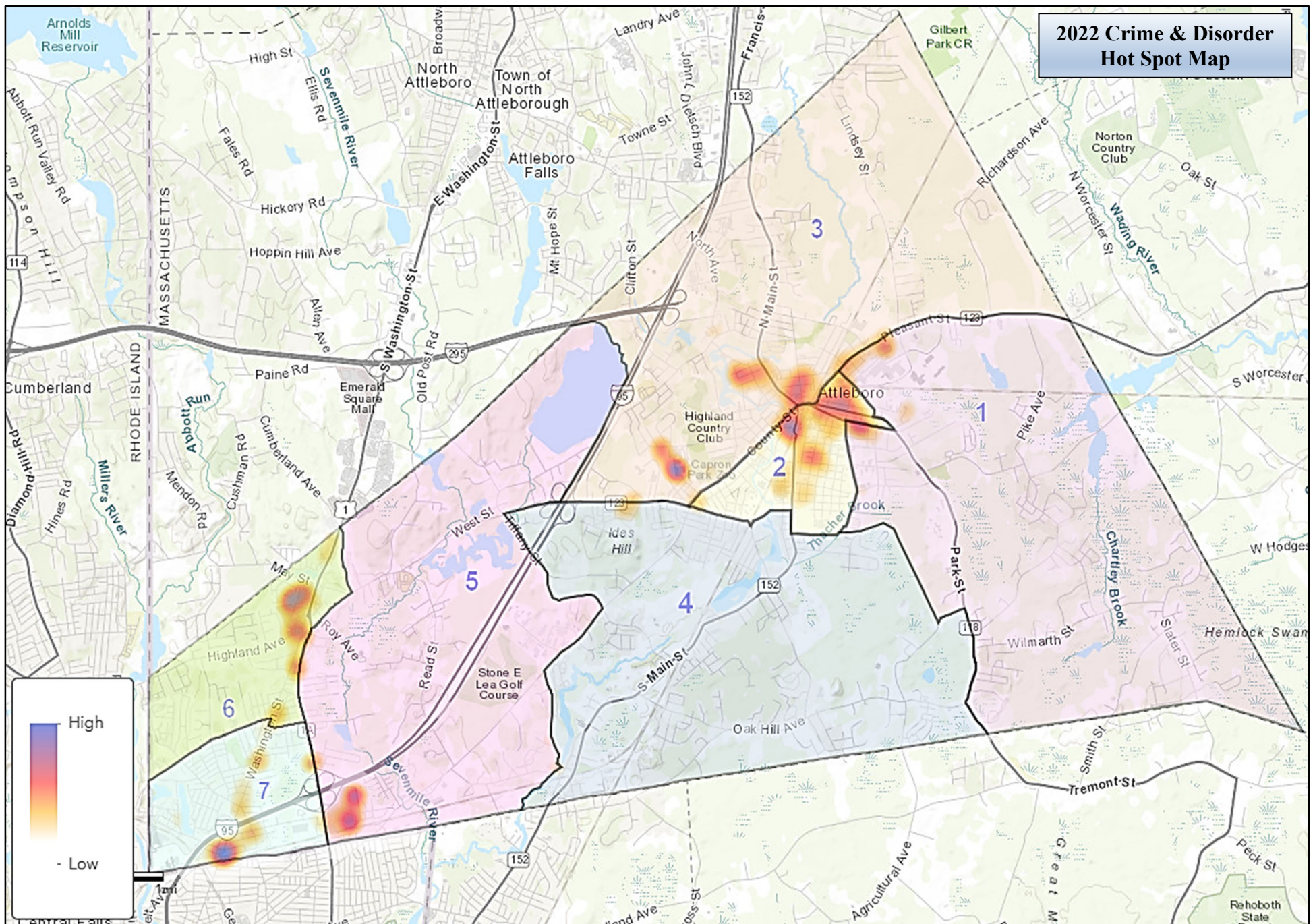
Ten-Year Call for Service Data														
CALL TYPE	2012	2013	2014	2015	2016	2017	2018	2019	2020	2021	2022	10YR Avg	Stddev	Z-Score
ABANDONED 911 CALL	627	557	473	556	629	942	1044	1283	1977	2120	1717	1021	569.023	1.22
ABANDONED M/V	43	33	36	42	67	88	83	76	65	72	82	61	19.242	1.12
ANIMAL RELATED	272	286	242	323	346	270	367	362	220	165	186	285	62.198	-1.60
Archive-Other	127	108	54	2	7	1	1	0	0	0	0	30	46.652	-0.64
ARSON	1	1	0	0	3	2	3	1	1	3	4	2	1.118	2.24
ASSAULT	113	66	118	123	95	97	103	124	170	180	143	119	32.442	0.74
ASSIST CITIZEN	1643	1892	1702	1033	462	410	458	562	729	872	930	976	539.478	-0.09
ASSIST FIRE DEPT	604	404	471	483	452	435	324	299	293	278	310	404	99.808	-0.94
ASSIST MOTORIST	0	0	0	0	0	0	1	52	79	102	93	23	37.248	1.87
ASSIST OTHER AGENCY	0	0	0	0	0	0	31	125	100	74	89	33	46.013	1.22
ASSIST OTHER PD	0	0	0	0	0	0	41	279	254	233	266	81	115.413	1.61
ATV/REC VEHICLE	105	54	69	82	58	75	34	50	106	75	63	71	21.922	-0.36
BOMB THREAT	2	4	0	3	2	0	0	2	0	0	0	1	1.418	-0.92
BREACH OF PEACE	1870	1563	1622	1506	1549	1615	1397	0	0	0	0	1112	736.759	-1.51
BREAK AND ENTER (BUILDING)	551	348	333	350	301	182	191	98	75	54	68	248	148.296	-1.22
BREAK AND ENTER (MV)	0	0	0	0	0	0	35	101	139	102	63	38	51.902	0.49
BURGLAR ALARM	1547	1528	1358	1422	1410	1458	1273	1228	1023	1023	1021	1327	178.993	-1.71
BUSINESS CHECK	0	0	0	0	0	0	3	24	167	187	203	38	69.948	2.36
CITY ORDINANCE VIOLATION	46	41	79	34	69	13	15	23	34	67	214	42	21.906	7.85
CIVIL MATTER	0	0	0	0	0	0	35	126	144	128	97	43	59.558	0.90
CODIS COLLECTION	0	0	0	0	0	0	0	0	2	2	7	0	0.800	8.25
CODIS VIOLATION	0	0	0	0	0	0	0	0	31	0	2	3	9.300	-0.12
CROSSING GUARD COVERAGE	0	0	0	0	0	0	16	103	14	78	205	21	35.627	5.16
CUSTODIAL INTERFERENCE	20	14	21	24	34	22	22	26	15	5	1	20	7.363	-2.62
DISABLED M/V	498	610	630	692	539	529	597	485	325	334	332	524	114.163	-1.68
DISTURBANCE	0	0	0	0	0	0	0	1012	925	850	908	279	427.262	1.47
DOMESTIC	286	375	467	568	600	628	636	672	712	775	678	572	145.076	0.73
EMD CALL	439	704	381	345	719	1382	954	0	0	0	0	492	431.850	-1.14
EMOTIONALLY DISTURBED PERSON	321	304	316	352	340	379	358	387	321	302	227	338	28.629	-3.88
ERRATIC M/V	336	291	317	398	491	460	442	460	365	374	347	393	64.483	-0.72
ESCORT	232	243	266	257	286	287	266	241	61	11	1	215	91.800	-2.33
FIELD INTERVIEW OBSERVATION	0	327	883	1476	1071	1162	1318	953	495	84	38	777	492.357	-1.50
FLAGGER NOTIFICATION	2	0	0	1	0	0	0	0	0	0	0	0	0.640	-0.47
FOLLOW UP INVESTIGATION	2956	2960	2840	2406	2387	2587	1436	454	189	163	162	1838	1109.041	-1.51
HARASSMENT	0	0	0	0	0	0	0	132	261	134	120	53	87.022	0.77
HARASSMENT PREVENTION ORDER VIOL	13	3	7	15	6	21	34	23	24	19	20	17	9.102	0.38
HARASSMENT PREVENTION ORDERS	159	65	68	94	137	121	179	178	204	137	106	134	45.155	-0.62
HOMICIDE	0	0	0	0	0	1	0	0	1	0	1	0	0.400	2.00
HURRICANE SANDY	159	0	0	0	0	0	0	0	0	0	0	16	47.700	-0.33
ICE DETAINER	1	0	0	0	0	0	0	0	0	0	0	0	0.300	-0.33
IDENTITY THEFT	0	0	0	0	0	0	6	11	329	88	74	43	98.644	0.31
ILLEGAL DUMPING	30	26	31	36	53	57	53	62	65	59	54	47	14.041	0.48
JUNK VEHICLE	11	1	1	3	6	0	4	0	0	0	0	3	3.412	-0.76
JUVENILE RELATED	147	32	36	50	88	73	95	148	141	157	227	97	46.316	2.81
KIDNAPPING	0	0	0	2	0	1	0	0	1	0	1	0	0.663	0.90
LARCENY	965	920	847	825	808	675	503	464	373	445	413	683	207.736	-1.30
LIQUOR ESTABLISHMENTS	39	56	24	34	16	10	0	0	0	0	0	18	18.817	-0.95
LOST PROPERTY	53	49	74	88	52	61	74	86	85	58	66	68	14.408	-0.14
M/V ACCIDENT	1710	1706	1773	1947	2002	2012	1963	0	0	0	0	1311	865.062	-1.52
M/V STOP	6543	8686	13826	11834	11648	10349	8575	7521	2328	1256	4572	8257	3842.079	-0.96
M/V TOWED	21	16	10	45	30	35	50	155	100	23	30	49	42.987	-0.43
MEDICAL	496	391	492	485	516	680	1208	2419	815	376	445	788	592.873	-0.58
MISC	633	662	639	571	713	639	855	525	155	161	124	555	215.174	-2.00
MISSING PERSON	142	86	108	111	190	156	117	64	22	29	25	103	51.018	-1.52

Ten-Year Call for Service Data														
CALL TYPE	2012	2013	2014	2015	2016	2017	2018	2019	2020	2021	2022	10YR Avg	Stdev	Z-Score
MISSING PERSON FOUND	0	0	0	0	0	0	1	4	11	37	36	5	11.073	2.77
MONITORING FREQ RP/OFFENDERS	0	0	826	926	323	30	3	2	0	232	352	234	339.164	0.35
MONITORING TOP CFS LOCATIONS	0	0	778	388	370	26	1	1	3	195	213	176	249.194	0.15
MUTUAL AID	319	259	259	258	294	363	280	16	2	0	1	205	133.829	-1.52
MVA HIT-N-RUN	0	0	0	0	0	0	0	232	161	184	223	58	89.615	1.84
MVA OVER	0	0	0	0	0	0	0	731	603	763	654	210	322.552	1.38
MVA PROPERTY DAMAGE	0	0	0	0	0	0	0	202	115	184	162	50	79.237	1.41
MVA UNDER	0	0	0	0	0	0	0	736	520	552	707	181	281.054	1.87
NARCOTICS	77	69	77	54	71	32	53	41	35	20	27	53	19.316	-1.34
NEGLECT/ABUSE	77	2	5	6	3	5	4	4	4	9	5	12	21.774	-0.32
NEMO BLIZZARD	0	51	0	0	0	0	0	0	0	0	0	5	15.300	-0.33
NO THRU TRUCKING	1	0	3	2	0	0	0	0	0	0	0	1	1.020	-0.59
NOISE COMPLAINT	0	0	0	0	0	0	103	321	557	424	343	141	201.562	1.00
NOTIFICATION	644	669	536	748	555	588	539	359	307	312	222	526	145.002	-2.09
OD DEATH	0	0	0	0	0	0	0	20	5	11	13	4	6.453	1.46
OPERATING UNDER INFLUENCE	55	47	58	83	94	49	35	47	26	24	24	52	21.395	-1.30
OVERDOSE	0	62	101	119	118	120	151	145	163	155	124	113	47.280	0.22
PARKING VIOLATIONS	438	491	558	1446	844	676	567	523	402	364	368	631	302.206	-0.87
PHONE CALLS	373	247	264	290	329	222	149	85	38	45	40	204	112.862	-1.45
POT HOLE CLAIM	0	0	0	0	0	0	0	4	5	5	15	1	2.154	6.31
PRISONER TRANSPORT	434	452	470	491	458	415	339	201	112	115	138	349	142.058	-1.48
PROPERTY CRIME	282	275	208	228	187	182	165	163	165	177	139	203	42.350	-1.52
PUBLIC INTOXICANTS	128	108	94	120	96	49	46	83	99	152	103	98	31.223	0.18
RAPE	8	3	8	7	3	4	3	7	3	2	1	5	2.272	-1.67
RECOVERED M/V	32	27	15	25	15	19	3	0	0	0	0	14	11.612	-1.17
RECOVERED PROPERTY	286	294	323	422	443	410	373	309	248	196	212	330	76.080	-1.56
RENDITION/EXTRADITION	22	29	39	62	48	46	41	44	26	34	45	39	11.273	0.52
REPOSSESSED M/V	15	10	13	43	66	62	71	77	56	69	100	48	24.855	2.08
RESIDENCE CHECK	0	0	0	0	0	0	13	22	256	262	358	55	102.104	2.96
RESTRAINING ORDER	540	393	341	408	485	420	415	428	364	456	447	425	54.781	0.40
RESTRAINING ORDER VIOL	45	62	54	42	57	59	55	62	52	46	53	53	6.726	-0.06
RETURNED PROPERTY	73	72	117	176	155	144	110	109	96	184	141	124	37.713	0.46
ROAD HAZARD	0	0	0	0	0	0	0	116	316	267	234	70	116.508	1.41
ROBBERY	18	11	7	9	11	16	10	11	20	13	9	13	3.929	-0.92
RUNAWAY JUVENILE	0	0	0	1	0	1	4	14	24	14	22	6	8.060	2.01
RX BIN DISPOSAL	0	0	0	0	0	0	0	11	18	22	25	5	8.179	2.43
SCAM BY FRAUDULENT MEANS	0	6	92	98	106	104	185	264	196	204	196	126	81.613	0.86
SECTION 12 SERVICE	0	0	0	0	0	0	0	0	0	99	150	10	29.700	4.72
SECTION 35 SERVICE	0	0	0	0	0	0	0	0	0	35	32	4	10.500	2.71
SECURITY CHECK	5509	16664	31667	29922	40265	41416	44050	47165	45177	51071	43165	35291	13793.483	0.57
SEX OFFENDER REGISTRATION	109	107	159	253	237	263	258	168	142	141	138	184	59.442	-0.77
SEXUAL OFFENSE	50	32	36	54	42	41	64	50	45	58	52	47	9.421	0.51
SUDDEN DEATH	41	39	44	40	45	67	44	32	44	70	63	47	11.543	1.42
SUMMONS SERVICE	1123	731	225	265	308	290	258	205	105	150	212	366	299.643	-0.51
SUSPICIOUS ACTIVITY	0	0	0	0	0	0	0	164	65	63	103	29	51.540	1.43
SUSPICIOUS PERSON	2943	3103	2586	2589	2457	2429	2416	992	62	42	35	1962	1093.310	-1.76
TAGGING	0	0	0	0	0	0	0	23	14	26	17	6	10.020	1.07
TENANT-LANDLORD INCIDENT	0	0	0	0	0	0	23	71	39	47	45	18	24.617	1.10
TRAFF HAZ/VIOLATION CMR	12	17	11	24	12	3	0	0	0	0	0	8	8.117	-0.97
TRAFFIC CONTROL	442	0	1	4	0	0	16	26	58	30	15	58	129.338	-0.33
TRAFFIC ENFORCEMENT	443	76	16	11	12	3	28	74	510	865	1201	204	283.160	3.52
TRESPASS	64	73	67	91	93	56	24	91	82	95	60	74	21.015	-0.65
VEHICLE DAMAGE ENVIRONMENTAL	2	0	0	0	1	0	3	0	0	0	0	1	1.020	-0.59
VICE/PROSTITUTION	0	0	0	0	1	0	6	5	2	1	0	2	2.110	-0.71
WARRANT SERVICE	433	461	852	512	396	415	419	262	196	135	170	408	187.747	-1.27
WEAPONS	15	2	8	3	5	3	7	5	1	12	8	6	4.277	0.44
WELL BEING CHECK	0	0	0	55	336	478	564	876	1086	1223	1228	462	444.118	1.73
TOTAL	38816	50356	71532	68893	77523	77421	77099	76999	66571	71547	67181	67676	12381.7494	-0.04

This bulletin was produced by the Attleboro Police Department Crime Analysis Unit.

Questions or feedback can be directed to Anthony Stevens at 508-222-1212 ext. 2167# or by email at AStevens@attleboropolice.org

2022 Crime & Disorder Hot Spot Map



2022 Calls for Service Hot Spot Map

